

A Snail's Pace

Unit Rate Task 1

Task Card 1

Watch the video on calculating unit rate:

<https://learnzillion.com/lessons/868-find-the-best-deal-by-comparing-unit-rates>

Task Card 2

“ A Snail’s Race”

- These snails move very slowly. Here are their speeds.

- *Snail A*

- 5 inches in 10 minutes

- *Snail B*

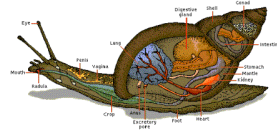
- 3 inches in 20 minutes

- *Snail C*

- 1 inch in 15 minutes

- *Snail D*

- 6 inches in 30 minutes



Task Card 3

1. How far can snail D travel in 1 hour? _____ inches

2. How far can snail C travel in half an hour? _____ inches

Show all work and record your answers on a piece of paper.

Task Card 4

3. How far can snail B travel in 2 hours? _____ inches

Show how you figured this out.

Task Card 5

4. Which snail moves more quickly than the others? _____

Explain how you figured this out.

Task Card 6

You and your partner will now **CONSTRUCT (level 5)**

2 more word problems to share with your classmates, involving unit rate with the snails.

Write these 2 problems on notecards.

Task Card

Now, practice unit rate by visiting these 2 sites and completing all of the practice problems:

<https://www.brainingcamp.com/content/rates/problems.php>

<https://www.brainingcamp.com/content/rates/questions.php>